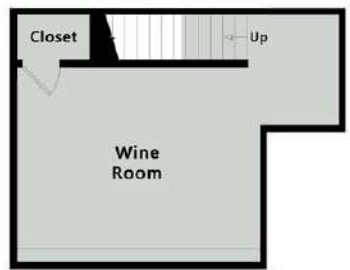


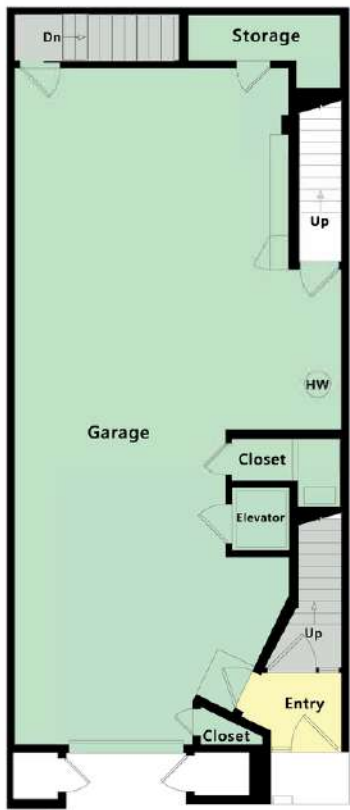
# 33-35 Perine Place

## San Francisco, CA

3,535 Sq Ft	1,200 Sq Ft
40 Sq Ft	1,085 Sq Ft



**First Level**  
355 Sq Ft



**Second Level**  
95 Sq Ft  
1,200 Sq Ft



**Third Level**  
1,140 Sq Ft  
340 Sq Ft

Note: Square footage derived per the exterior face of all boundary walls.  
 Note: Square footage data represents an estimate and has been derived simply for the marketing-style floor plans developed by Open House Drafting.

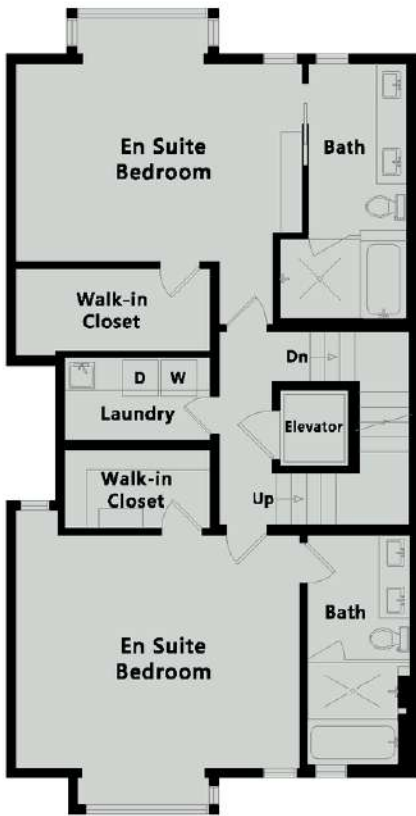
Note: Square footage derived per the exterior face of all boundary walls.

Note: Square footage data represents an estimate and has been derived simply for the marketing-style floor plans developed by Open House Drafting.

# 33-35 Perine Place

San Francisco, CA

3,535 Sq Ft	1,200 Sq Ft
40 Sq Ft	1,085 Sq Ft



**Fourth Level**

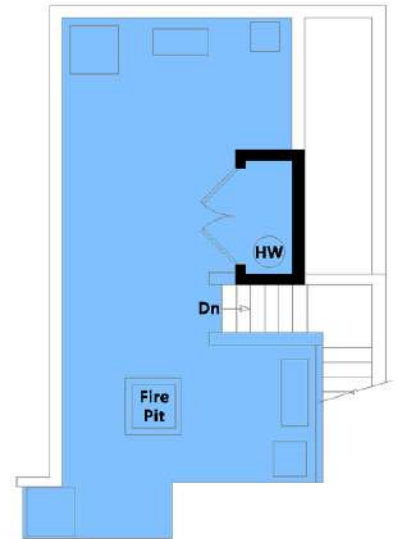
1,170 Sq Ft



**Fifth Level**

775 Sq Ft

295 Sq Ft



**Roof Deck**

450 Sq Ft